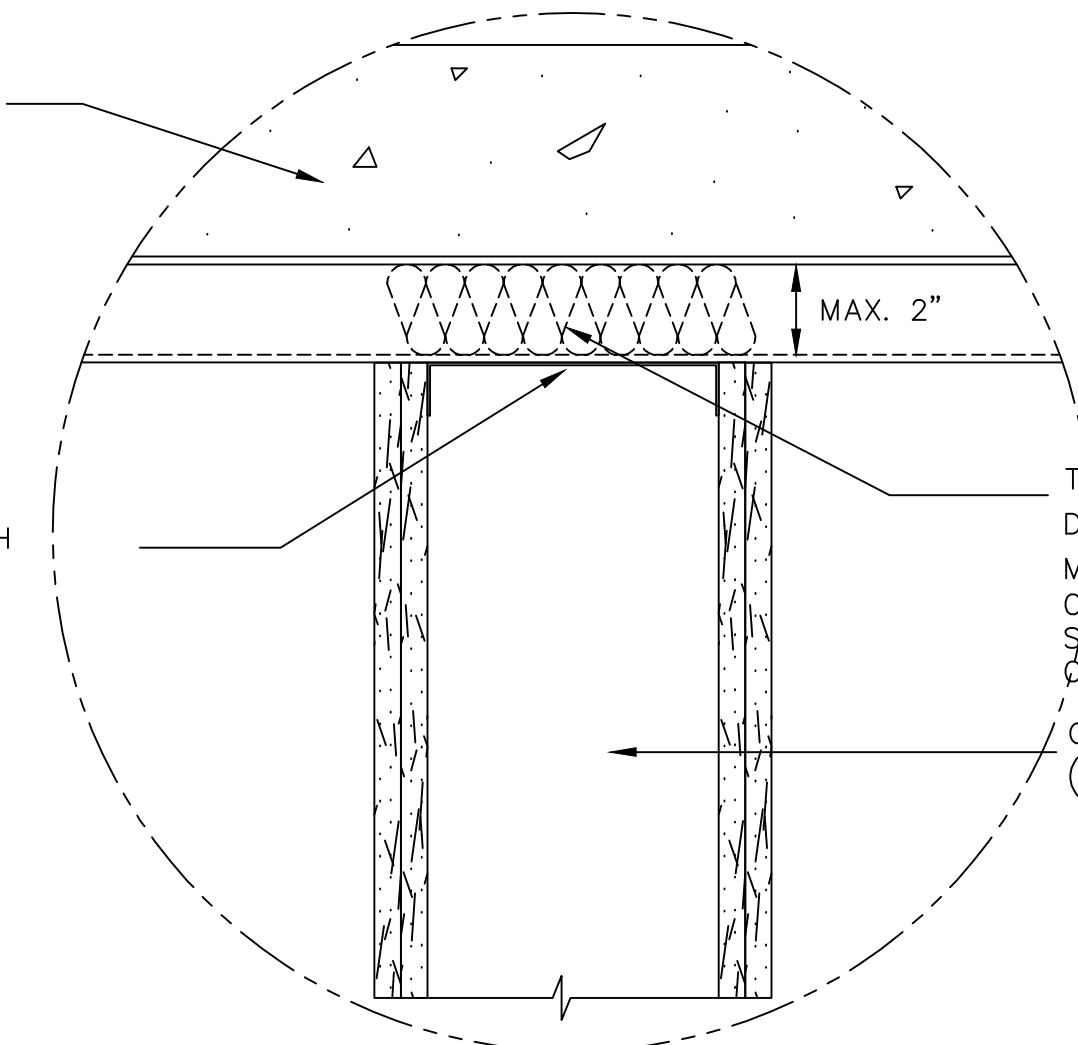


FLOOR OR ROOF
SLAB ASSEMBLY

RUNNER—ATTACH WITH
ANCHORS 2'-0" O.C.



MAX. 2"

TIGHTLY FILL VOIDS AT METAL
DECK WITH THERMAFIBER SAFING
MATERIAL—4#/CF DEN.
COAT SURFACES WITH ACOUSTICAL
SEALANT FOR OPTIMUM SMOKE
CONTROL.

CONTINUOUS STEEL STUDS
(16"/24" O.C.)

TEST REF: UL DES U411
UL DES U412

SMOKE AND 2 HOUR PARTITION

SCALE: 3"=1'-0"

DATE: 2/26/91

DETAIL
SHEET

UNITED STATES GYPSUM COMPANY

This Gypsum Board Assembly detail must
not be used without a complete evaluation by owner's design professional
to verify the suitability of the design for a given structure.