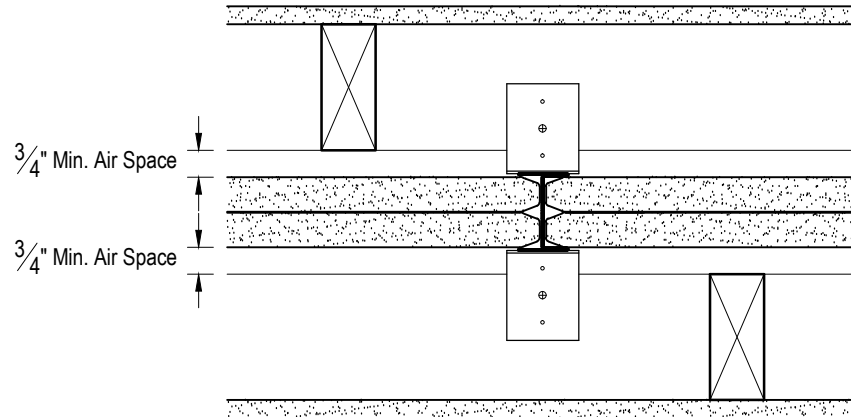


CONFIGURATION A

EXPOSED TO FIRE FROM AREA SEPARATION WALL SIDE ONLY

INTERIOR WALL

Area Separation Wall **UL336** - two 1" SHEETROCK Brand Gypsum Liner Panels set between USG 2" H-Studs, 25 ga. @ 24" o.c. - 2x4 wood (or steel) studs 16" o.c. one side on 2x4 wood plates spaced a minimum of $\frac{3}{4}$ " from the Liner Panels

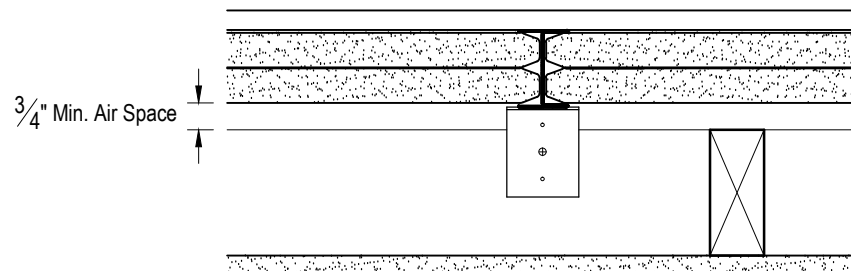


CONFIGURATION B

EXPOSED TO FIRE FROM EITHER SIDE OF AREA SEPARATION WALL

INTERIOR WALL

Area Separation Wall **U336** - two 1" SHEETROCK Brand Gypsum Liner Panels set between USG 2" H-Studs, 25 ga. @ 24" o.c. - 2x4 wood (or steel) studs 16" o.c. each side on 2x4 wood plates spaced a minimum of $\frac{3}{4}$ " from the Liner Panels



CONFIGURATION C

EXPOSED TO FIRE FROM EITHER SIDE OF AREA SEPARATION WALL

EXTERIOR WALL

Area Separation Wall **U336** - two 1" SHEETROCK Brand Gypsum Liner Panels set between USG 2" H-Studs, 25 ga. @ 24" o.c. - 2x4 wood (or steel) studs 16" o.c. one side on 2x4 wood plates spaced a minimum of $\frac{3}{4}$ " from the Liner Panels - Exterior side minimum $\frac{1}{2}$ " exterior sheathing with weather barrier & cladding