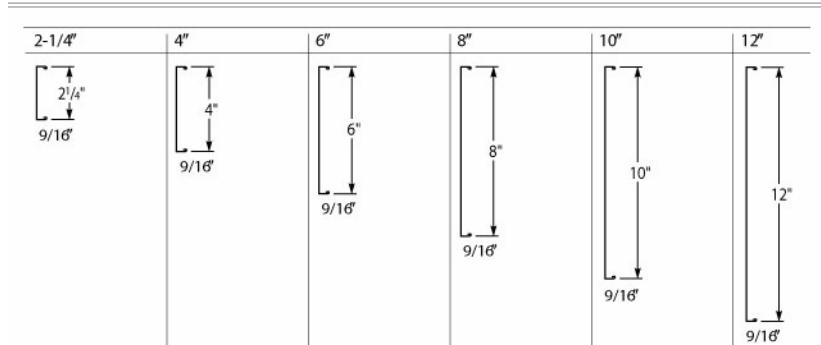


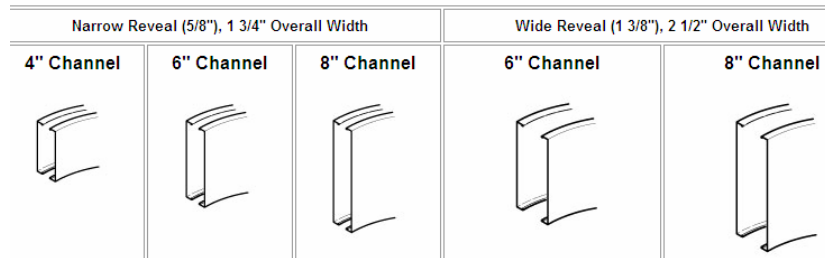
Compasso Revit Families

These Revit families are for straight edge trims only



C2 Paired Compasso Revit Families

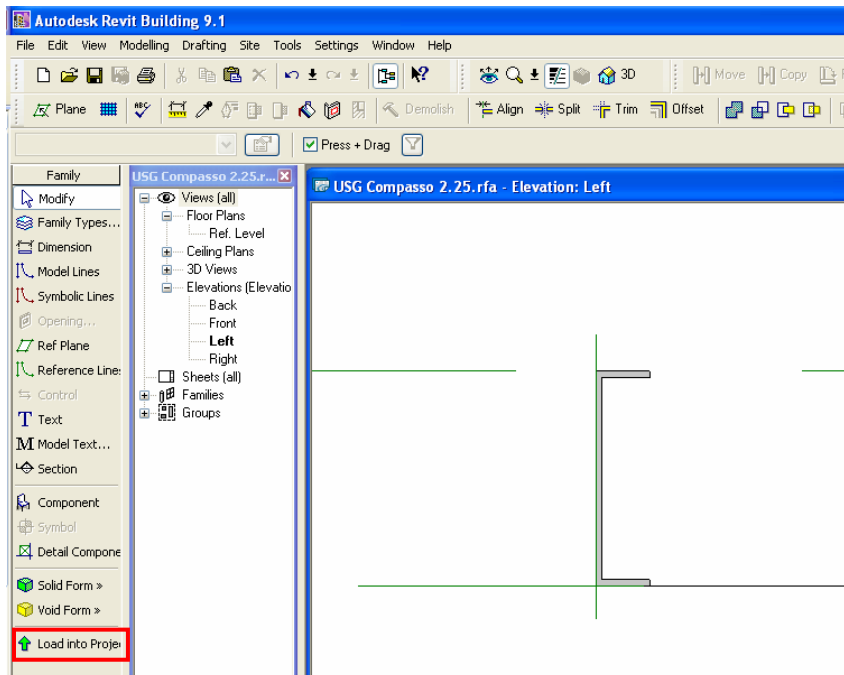
These Revit families are for straight edge channels only



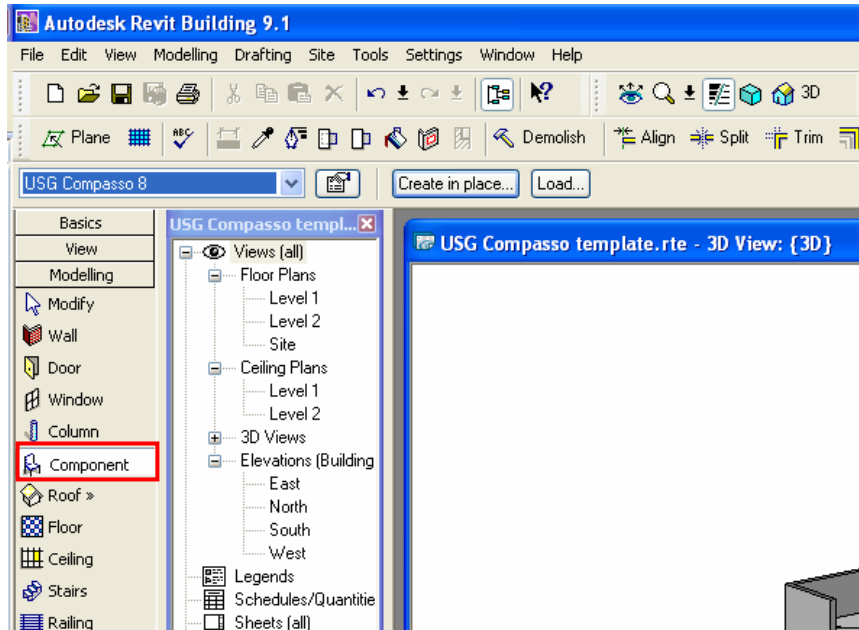
NOTE: Compasso families for *straight* trims and channels can be downloaded one at a time or all at once by downloading the Revit Template. Revit profiles are provided to create customized *curves* for each trim or channel size.

How to use straight Compasso in a project:

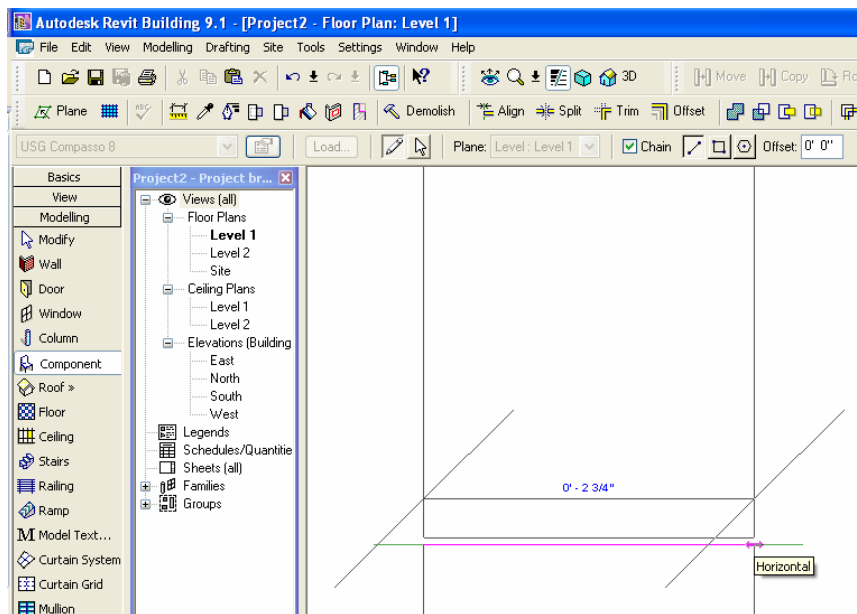
1. Open the Compasso Revit family that was downloaded from the webpage. Click on **Load into Project** (make sure to have current project Revit file open).



- Once loaded, Revit families for Compässö trims and channels (straight only) can be found in **Component** under Modelling:



- After selecting the Compässö family under Component, click and drag lines in the Floor Plan view (similar to drawing walls).



4. Move the Compasso family to the correct height by opening one of the Elevation views. Compasso trims can be snapped to ceiling edges.

Because of the many radius options for curved Compasso, it is not possible to provide a family for each option. Therefore, Revit profiles are available to create customized curved Compasso families. For two examples, click on “curved trim example” (see below).

Compasso:

Compasso Revit Families
These Revit families are for straight edge trims only

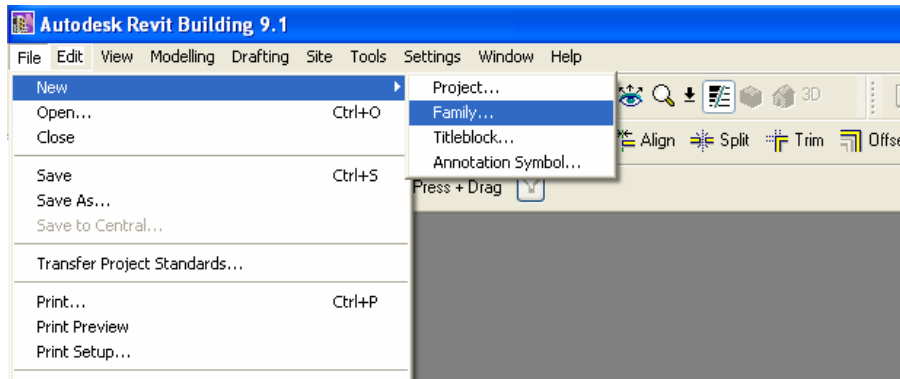
2-1/4"	4"	6"	8"	10"	12"

Compasso Revit Profiles
Use these Revit family profiles to create customized curved trim families in Revit [\(curved trim example\)](#)

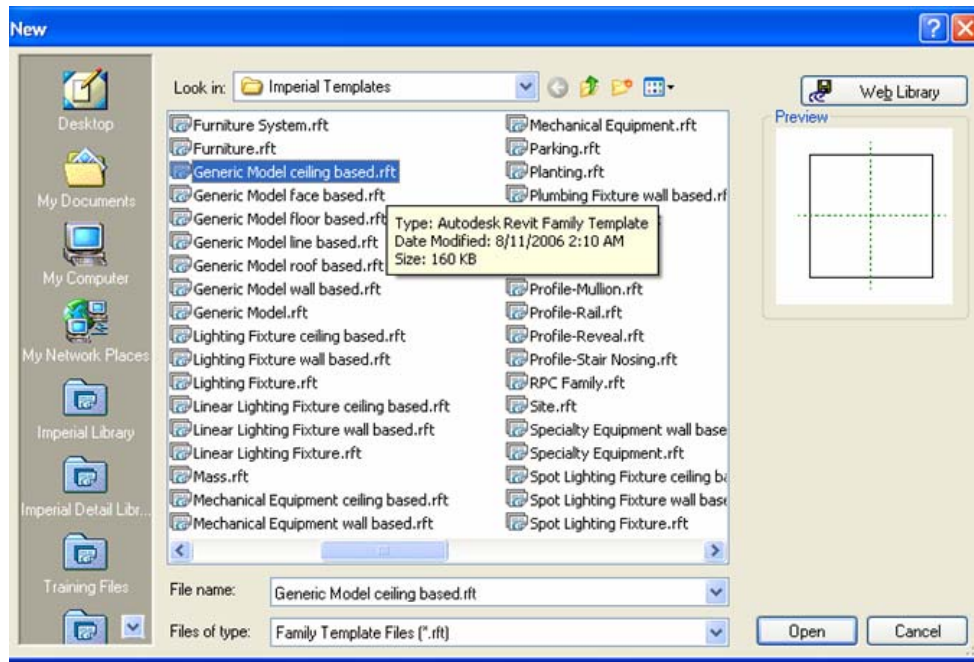
2-1/4"	4"	6"	8"	10"	12"

How to create customized curved Compasso families using profiles provided:

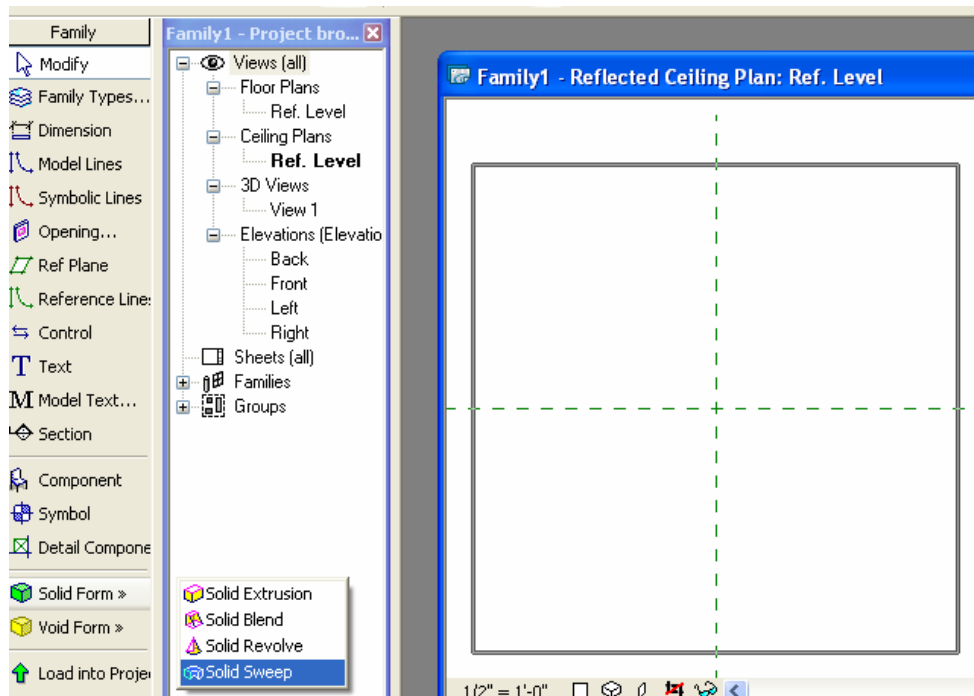
1. Download a Compasso Revit profile and save to Desktop (or preferred folder). In Revit, click on **File** and **New**. Select **Family...**



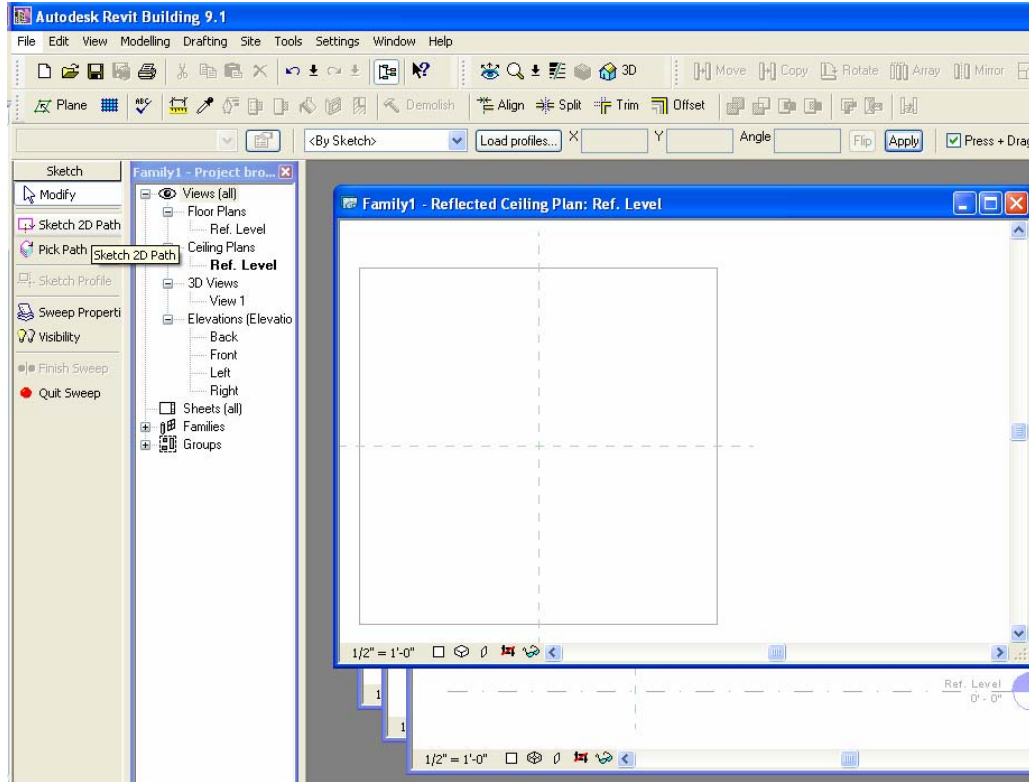
2. Select **Generic Model ceiling based.rft** (only if Compàsso will be used in a ceiling, otherwise choose Generic Model.rft). Click Open.



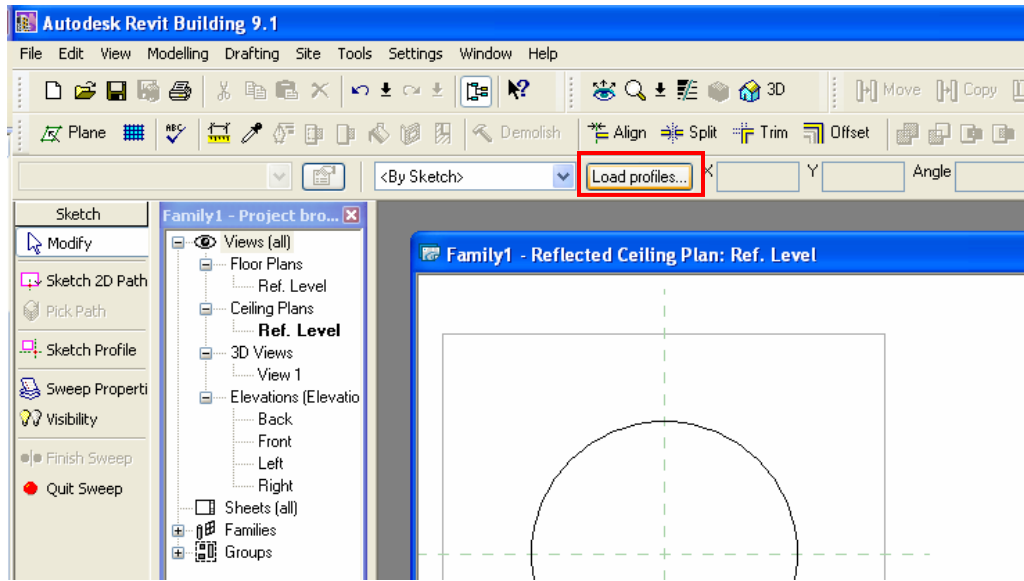
3. Click on **Solid Form** and select **Solid Sweep**.



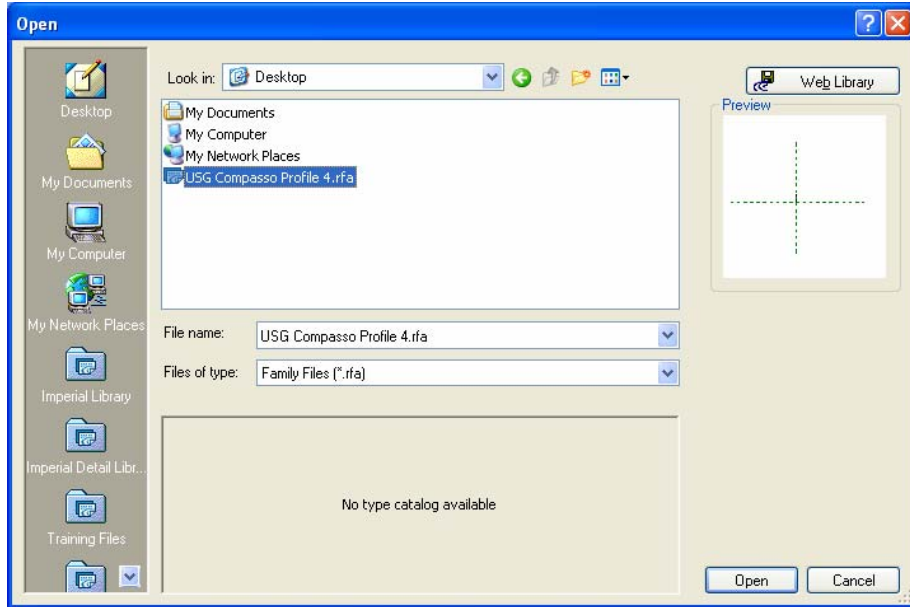
4. Select **Sketch 2D Path**. Use Lines to draw the perimeter of the space or a path for the profile to follow. Then click **Finish Path**.



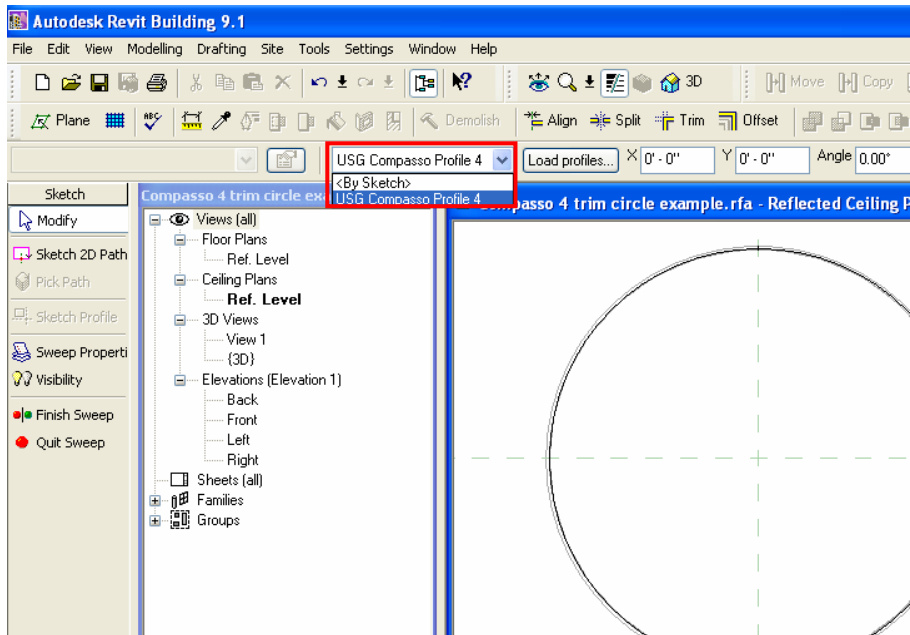
5. Click on **Load profiles...**



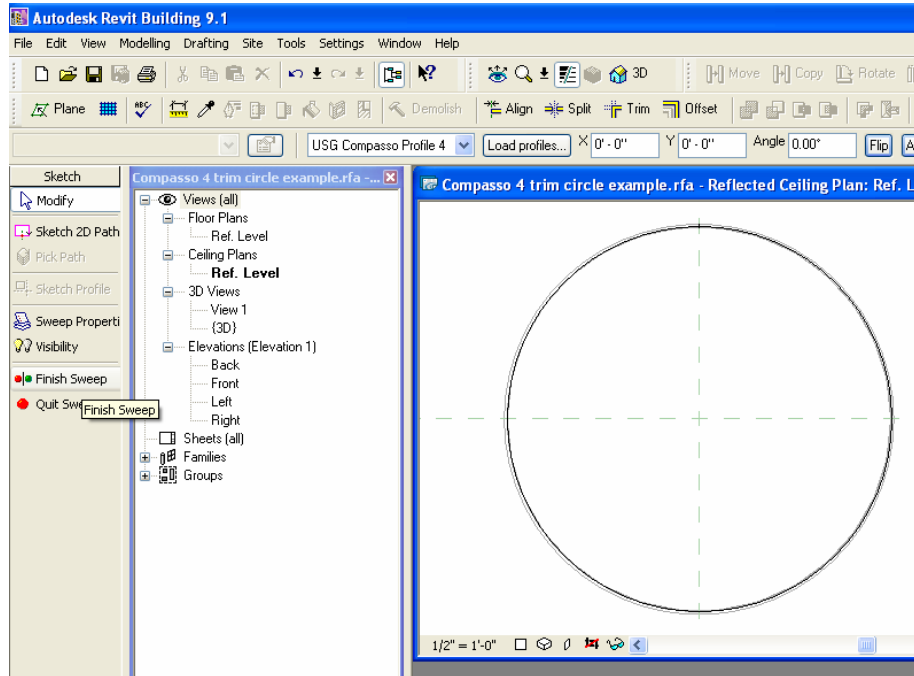
6. Load the saved Compàsso Revit profile by selecting the rfa file from the Desktop (or preferred folder). Click Open.



7. Next to Load profiles... click the drop down arrow and select the loaded family.



- Click on **Finish Sweep**. Save file and click **Load into Project**.



- Create a ceiling in the project Revit file. Then select the Compasso family just loaded in **Component** under **Modelling** and drop it into the ceiling.

